

History – Year 2 – Kirkham: The Willows School

Topic Overview

We will learn out our school ... The Willows! We will find out how Kirkham and our school have changed over time. We'll look at old photos and books, talk to someone who came here years ago, and see what school life was like in the past. We will learn about old playground games and how World War II changed The Willows and our community.



Queen Victoria



Queen Elizabeth II



Important Vocabulary

Roman Fort-

a strong place with tall walls, big gates and towers where Roman soldiers lived and stayed safe from their enemies.

Georgian Era-

from 1714 to 1837 when four kings called George ruled Britain one after another.

Victorian Era-

from 1837 to 1901 when Queen Victoria was the ruler of Britain.

Elizabeth 11 Era-

from 1952 to 2022 when Queen Elizabeth II was on the throne.

World War II-

a world war that took place between 1939 and 1945.

Evacuee -

A person who had to move from a place that is dangerous to a safe place, usually during war.

End Points

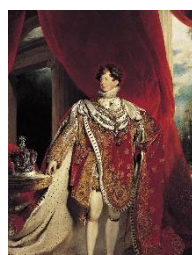
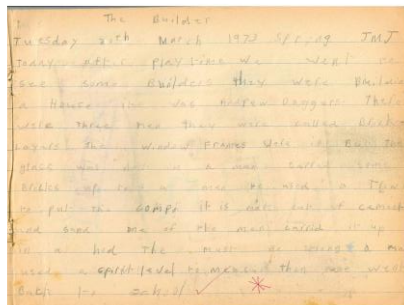
I know that Kirkham was a Roman town and had a Fort.

I know that in 1826 Father Sherburne opened The Willows School.

I know that boys and girls were taught in separate classes in the past.

I know that the current Willows school building was built during the 1970s and completed in 1977.

I know that during WWII the number of children at The Willows increased because of the number of evacuees.



King George IV

